

Mac OS X (Leopard) Printing

(1) Obtain an account from Prashant or James

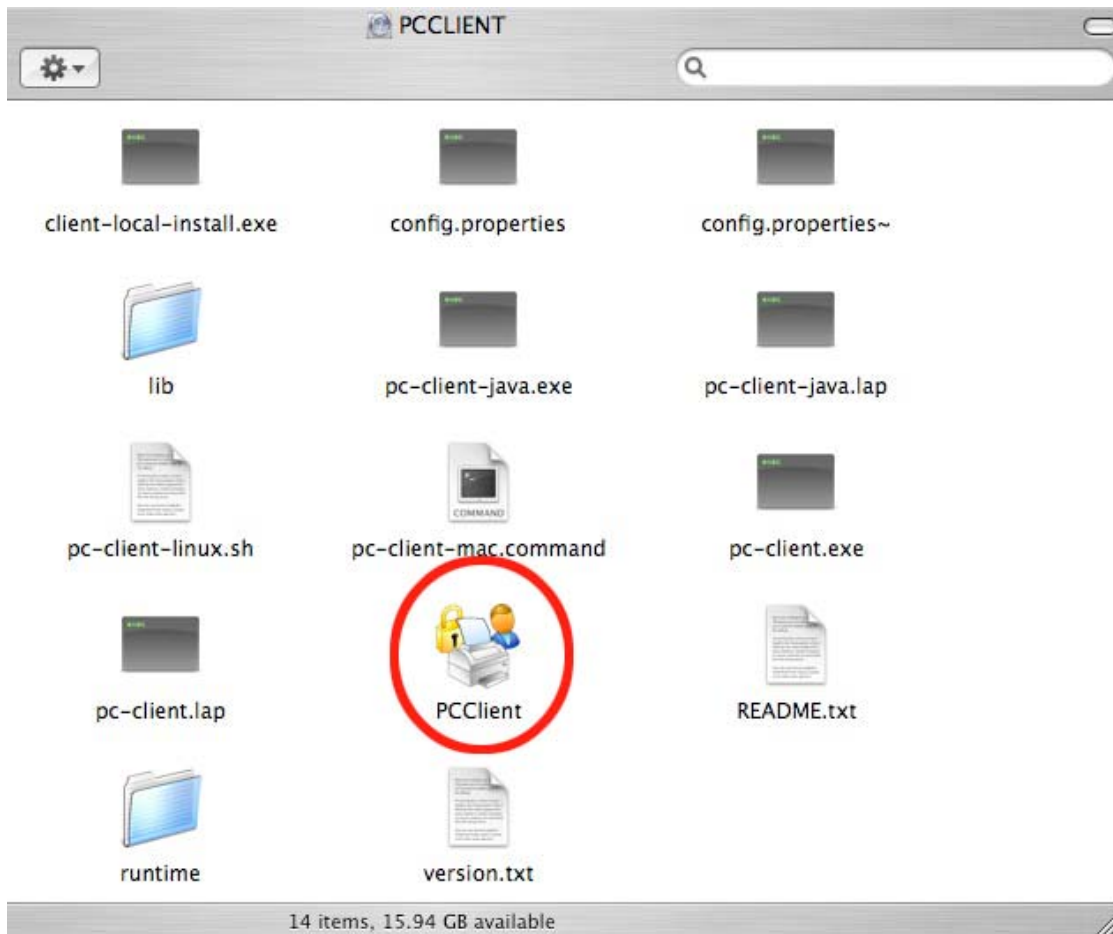
You will need to know your username on your local machine, as the user names on the local machine and the print server must match. So please have this information handy when asking for an account.

(2) Install the PaperCut NG client software onto your local machine

-- Open the Finder and select *Go > Connect to Server*

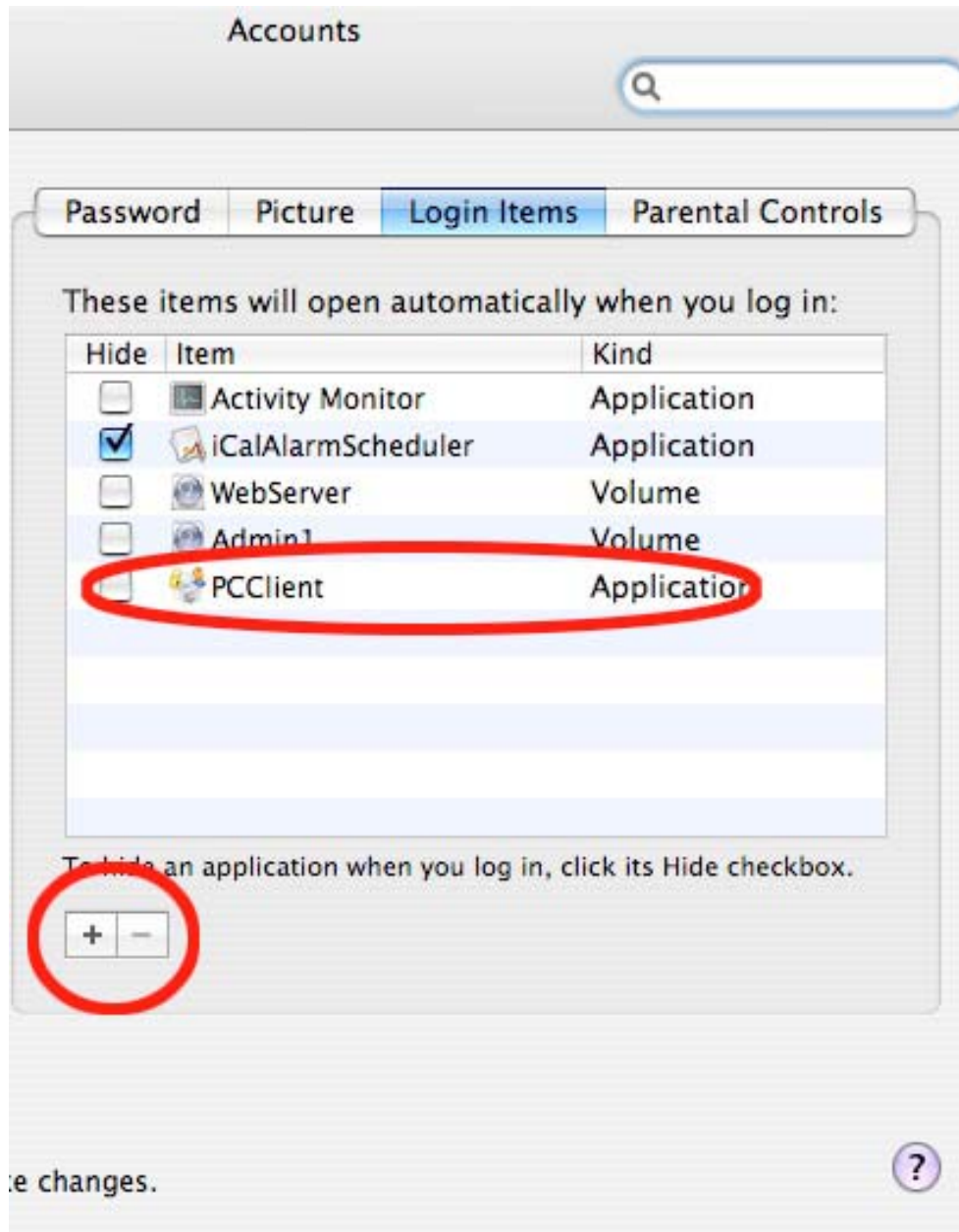
-- Enter in: **smb://print.atmos.ucla.edu/pcclient** as the server address, and press *Connect*

-- Drag the PCClient application across to the local Applications directory



-- Open *System Preferences* from the Apple menu

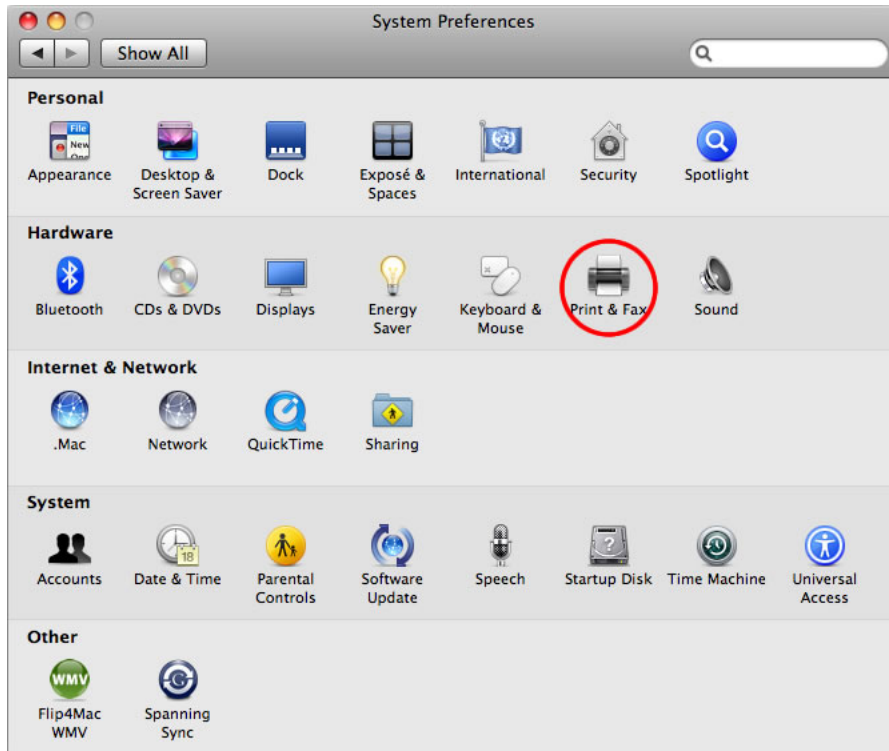
- Select *Accounts*
- Click the *Login Items* tab
- Click the + button and select the PCClient application



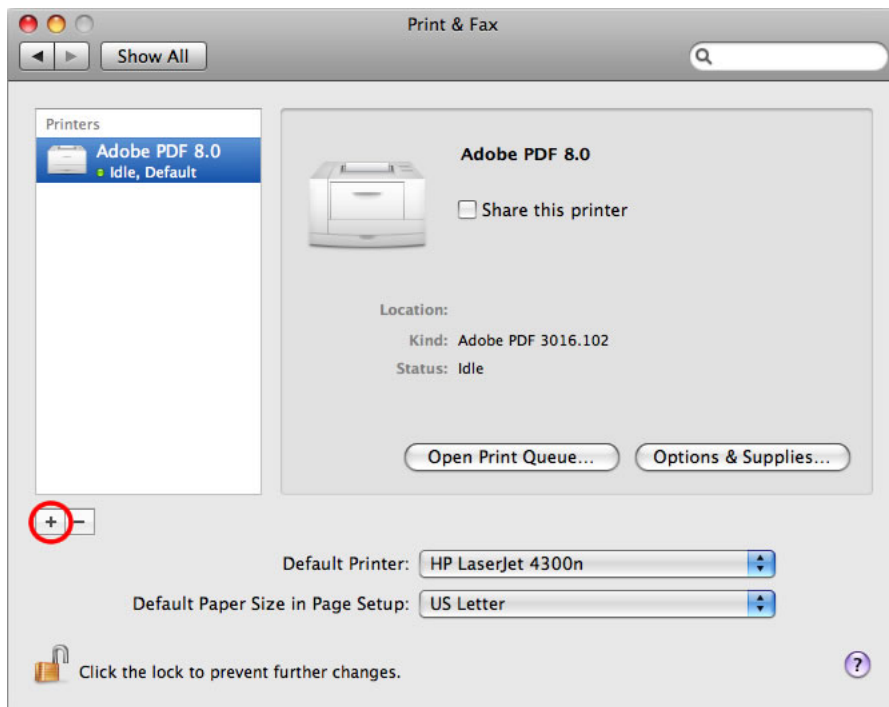
- Logout of the system and then log back in to ensure the client starts upon login

(3) Setup printer(s)

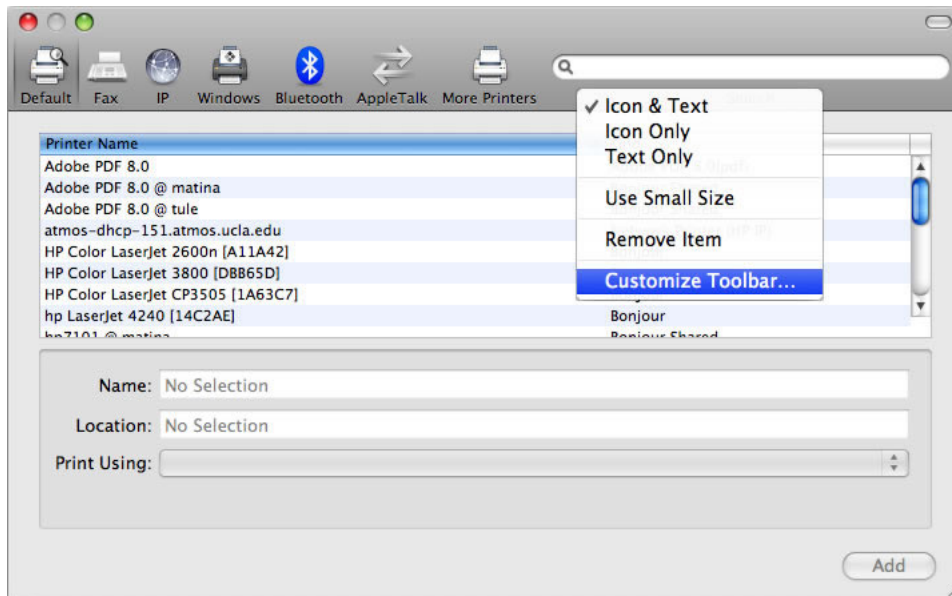
-- Open *Print & Fax* in the *System Preferences*



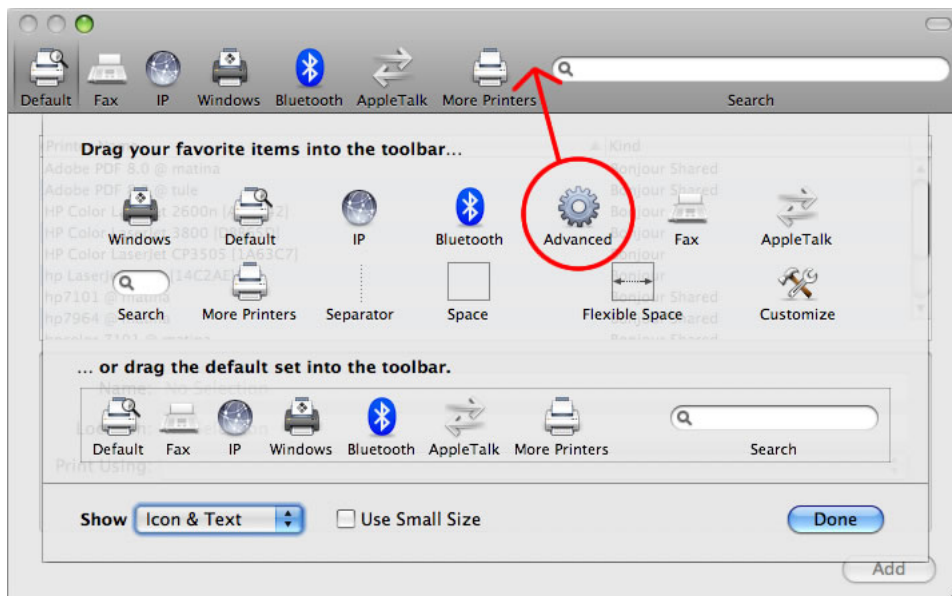
-- Click the + button to add a new printer



-- Right-click (or Control-click) the Toolbar and select *Customize Toolbar...*



-- Drag the *Advanced* button onto the Toolbar



-- Click the *Done* button

-- Click on the *Advanced* button

-- Choose *Windows* for the *Type* option (*note: you may need to wait a moment for the options on this window to become available*)

-- Enter a *URL* of the form:

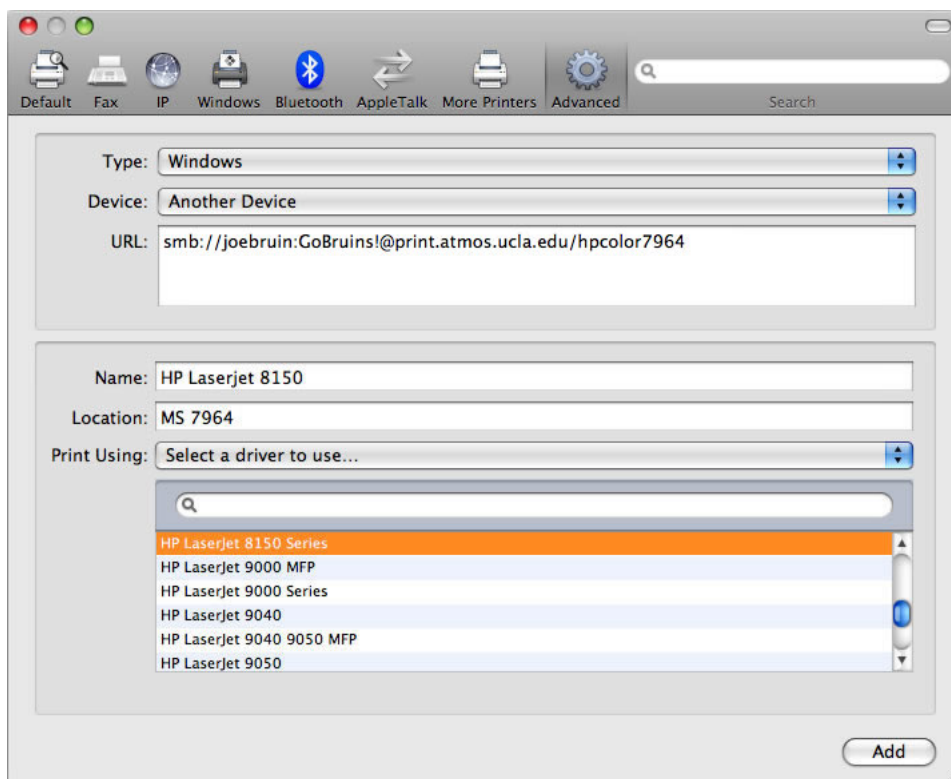
```
smb://username:password@print.atmos.ucla.edu/printer_name
```

Where *username* and *password* are your login details for the print server, and the *printer_name* is the printer's share name. So, if you are the user *joebruin*, with a password of *GoBruins!*, and were adding the printer *hpcolor7964*, the *URL* would look like:

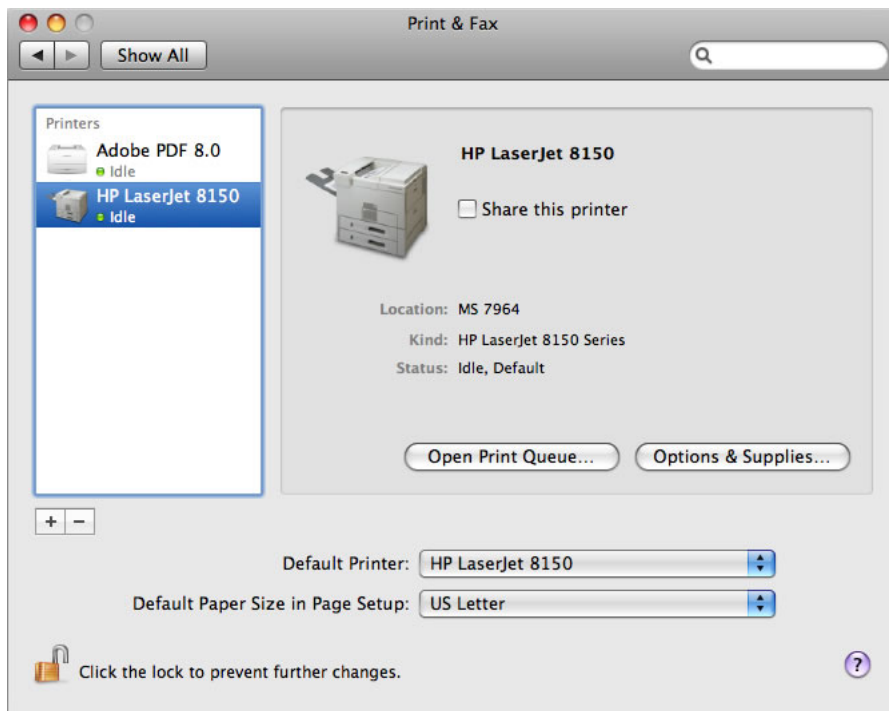
```
smb://joebruin:GoBruins!@print.atmos.ucla.edu/hpcolor7964
```

-- For the *Print Using* option, choose *Select a driver to use...*

-- Scroll through the list of available print drivers until you find one that matches the appropriate printer.



-- Click the *Add* button



-- Send a test job to the printer you just added, and make sure that the PaperCut client logged the print job properly.